



We shape **the materials**
of the future to protect **people**
and the **environment**

We shape **the materials of the future** to protect **people** and the **environment**

lpm.group is a company established in the bioplastics and plastics processing industry, thanks to its ability to offer **solutions that anticipate future needs** in packaging and industrial safety.

VISION

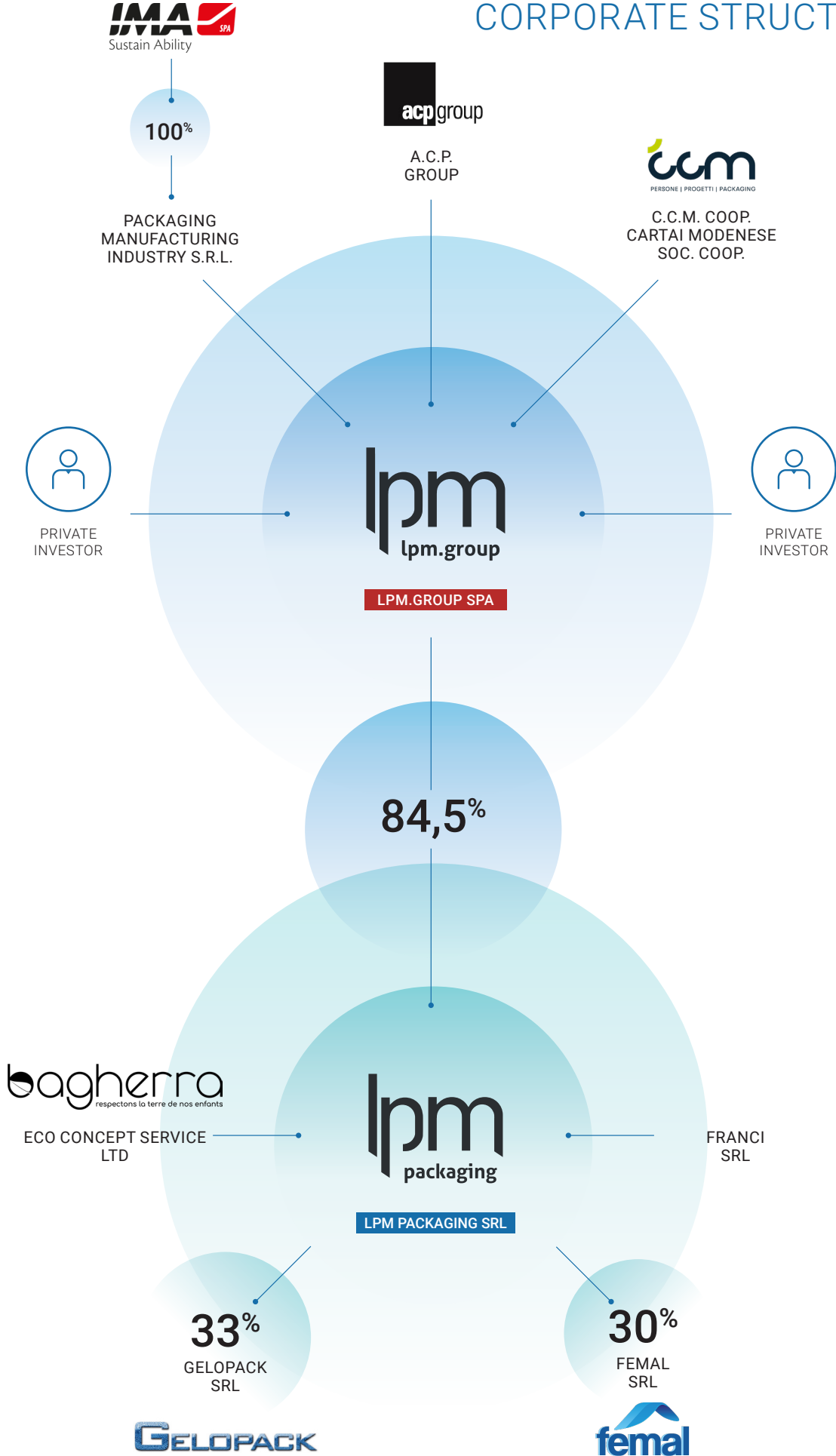
Industrial products should be designed to be sustainable and aligned with the environment.

MISSION

lpm mission is unequivocal: to deliver high-quality bioplastic and plastic solutions that safeguard both individuals and the environment. The core principles of innovation, research, and efficiency guide **lpm** in ensuring that the entire production process remains sustainable for both nature and communities.

- Our mission is realized through tangible actions. We are committed to ongoing investment in research and development, aimed at innovating our production methods and integrating new technologies that enhance both the quality and efficiency of our offerings. We engage in partnerships with research institutions and universities to create sustainable solutions that minimize the environmental footprint of our operations.
- Daily, we work to improve our products and services by attentively considering our customers' requirements and addressing market demands. Our objective is to establish ourselves as the preferred partner for businesses in search of dependable and advanced solutions, thereby contributing to their success and expansion.
- We foster a culture of safety throughout all entities within our group by educating our personnel and increasing awareness among our customers regarding the significance of workplace safety.

CORPORATE STRUCTURE



PRODUCTION FACILITIES

Attention to the environment is integrated into all aspects of our company, including the decision to consolidate our three Bologna locations into a new, low-impact facility to reduce transportation needs and CO₂ emissions.



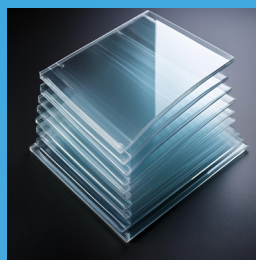
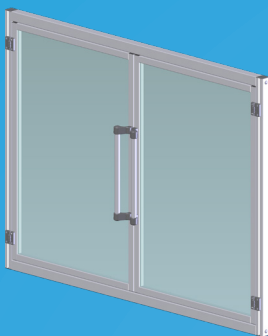
PRODUCTION FACILITIES



- Ipm packaging**
- Production of Fruit and Vegetable Bags.
 - Production in plastic and bioplastic.
 - Extrusion, printing, welding, and recycling processes.



- Ipm packaging**
- Production of shopping bags, pouches, sacks, and films in plastic and bioplastic.
 - Commercialization of bioplastic and plastic raw materials.
 - Extrusion, printing, welding, and recycling processes.



- Ipm.group**
- Processing of plastic sheets.
 - Processing of extrusions in aluminum and stainless steel.
 - Design and production of safety guard systems and partition panels.
 - Custom processing of plastic materials for design and decorative items.
 - Recovery of processing scraps.

PRODUCTION CAPACITY



Annual processing capacity:

50,000 m² of **PC** (polycarbonate),

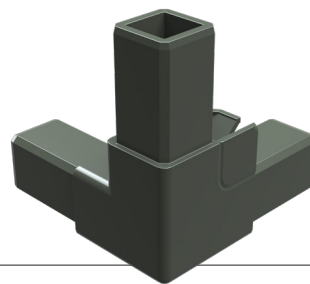
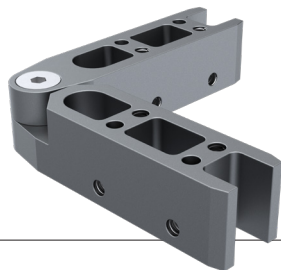
10,000 m² of **PMMA** (polymethyl methacrylate),

400,000 m of **aluminum**, totaling **350,000 Kg**,

these materials are transformed into

8,500 safety guards for industrial machines

and **60,000 custom-designed parts**



TECHNOLOGIES

4 CNC machines with 3 axes and automatic loading for plastic processing

3 CNC machines with manual loading for plastic processing

- 1 with 3 axes,
- 1 with 4 axes,
- 1 with 5 axes

2 CNC machines with 3 axes and automatic loading for aluminum profile

1 department for finishing and precision bonding of plastic products

1 department for precision processing of metal products

1 assembly department





VILLANOVA D'ALBENGA PLANT

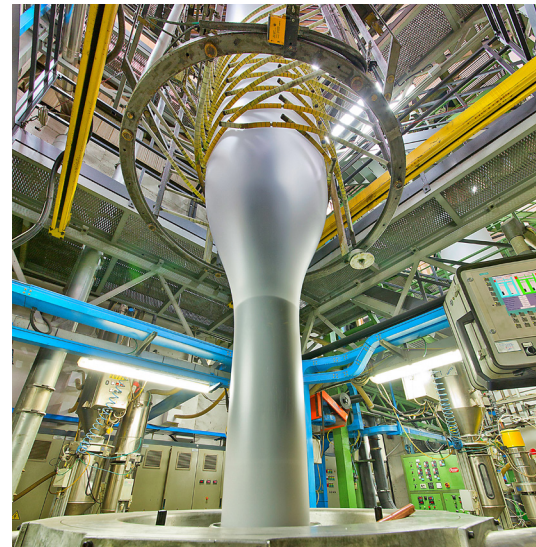
Daily processing capacity: **16,000 Kg** of bioplastic and plastic producing **4,000,000** bags for the fruit and vegetable sector.

Annual processing capacity: **4,000,000 Kg** of bioplastic and plastic with an average production of **1,000,000,000 pieces**



TECHNOLOGIES

- | | |
|---|--|
| 2 centralized gravimetric mixing plants | 13 in-line printing machines |
| 11 extruders (including 4 co-extruders) | 1 8-color printing machine |
| 15 welders for shopping bags, sacks, and rolls | 1 central drum printing machine with 12 colors |
| | 2 recycling and recovery plants for processing scraps and waste |



ROVIGO PLANT

Daily processing capacity: **21,600 Kg** of bioplastic and plastic, producing **1,700,000 pieces** (bags and sacks in various sizes and uses made of bioplastic and plastic)

Annual Processing Capacity: **5,400,000 Kg** of bioplastic and plastic with an average production of **420,000,000 pieces**



SUSTAINABILITY

Sustainability is the cornerstone of our vision and is therefore an integral part of our **production process** and **company culture**.

In the production lines for bioplastic and plastic bags, we use only carefully selected and properly tracked **raw materials**.

All scraps and waste from the processing of bioplastic, plastic, or aluminum are recovered to be correctly reused.

CERTIFICATIONS AND LICENSES



QUALITY MANAGEMENT STANDARDS, ENVIRONMENTAL MANAGEMENT, AND OCCUPATIONAL HEALTH AND SAFETY MANAGEMENT

lpm.group has always addressed quality, environmental, and safety issues with great diligence and attention, and is therefore certified according to ISO 9001, ISO 14001, and ISO 45001:2018 standards.



The group's solutions are certified and accredited by ACCREDIA based on the ISO 14120 standard, having passed projectile and pendulum tests.



lpm.group commissioned a technical study to conduct a Life Cycle Assessment (LCA) to evaluate the environmental profile of various types of flexible plastic and bioplastic packaging. The study complied with the following international standards:

- ISO 14040:2006
- ISO 14044:2006
- RCP - Reusable Bags in PE



BIODEGRADABILITY AND COMPOSTABILITY CERTIFICATION

The quality and compostability of the products manufactured by **lpm.group** are ensured by the CSI High Performance Bag (HPB) certification and the TUV AUSTRIA certifications "OK Compost Industrial" and "OK Compost Home".



CERTIFICATION HIGH PERFORMANCE BAG "HPB"

The certification for the 'CSI High Performance Bag' label is a unique tool at the European level, aimed at introducing the concept of quality in terms of performance for shopping bags, in compliance with the UNI 11415 standard. This standard defines the shape, dimensions, and performance requirements that handle bags, known as 'Shoppers,' must meet, which are already certified according to UNI EN 13432.



Mater-Bi is a family of biodegradable and compostable bioplastics used to create solutions and products with a reduced environmental impact.

It complies with the UNI EN 13432 standard.



ESG RESPONSIBILITY

lpm.group is committed to promoting clean energy through its photovoltaic plant (600 kW) launched in 2023. This initiative contributes to reducing environmental impact and supports the adoption of renewable energy sources.

7 CLEAN AND AFFORDABLE ENERGY



Ensuring a continuous reduction in environmental impact requires the development of new high-tech products; therefore, new machinery will be introduced, R&D activities will be increased, and relationships with research centers will be strengthened.

lpm.group emphasizes respect for its employees, the dignity of workers, and the development of the local community.

8 DECENT WORK AND ECONOMIC GROWTH



9 BUSINESS, INNOVATION, AND INFRASTRUCTURE



lpm
lpm.group

13 FIGHT AGAINST CLIMATE CHANGE



In the zero-waste economy **lpm.group** develops a strategy for raising awareness about the recovery and regeneration of all materials involved in our activities, from plastics and bioplastics to aluminum, paper, cardboard, and wood.

5 GENDER EQUALITY



lpm.group ensures equal treatment by providing access to resources and opportunities for individual growth.

15 LIFE ON LAND



Environmental consideration is integrated into all aspects of the company, including the decision to consolidate the three Bologna locations into a new, low-impact facility to reduce transportation needs and CO₂ emissions..

14 LIFE BELOW WATER

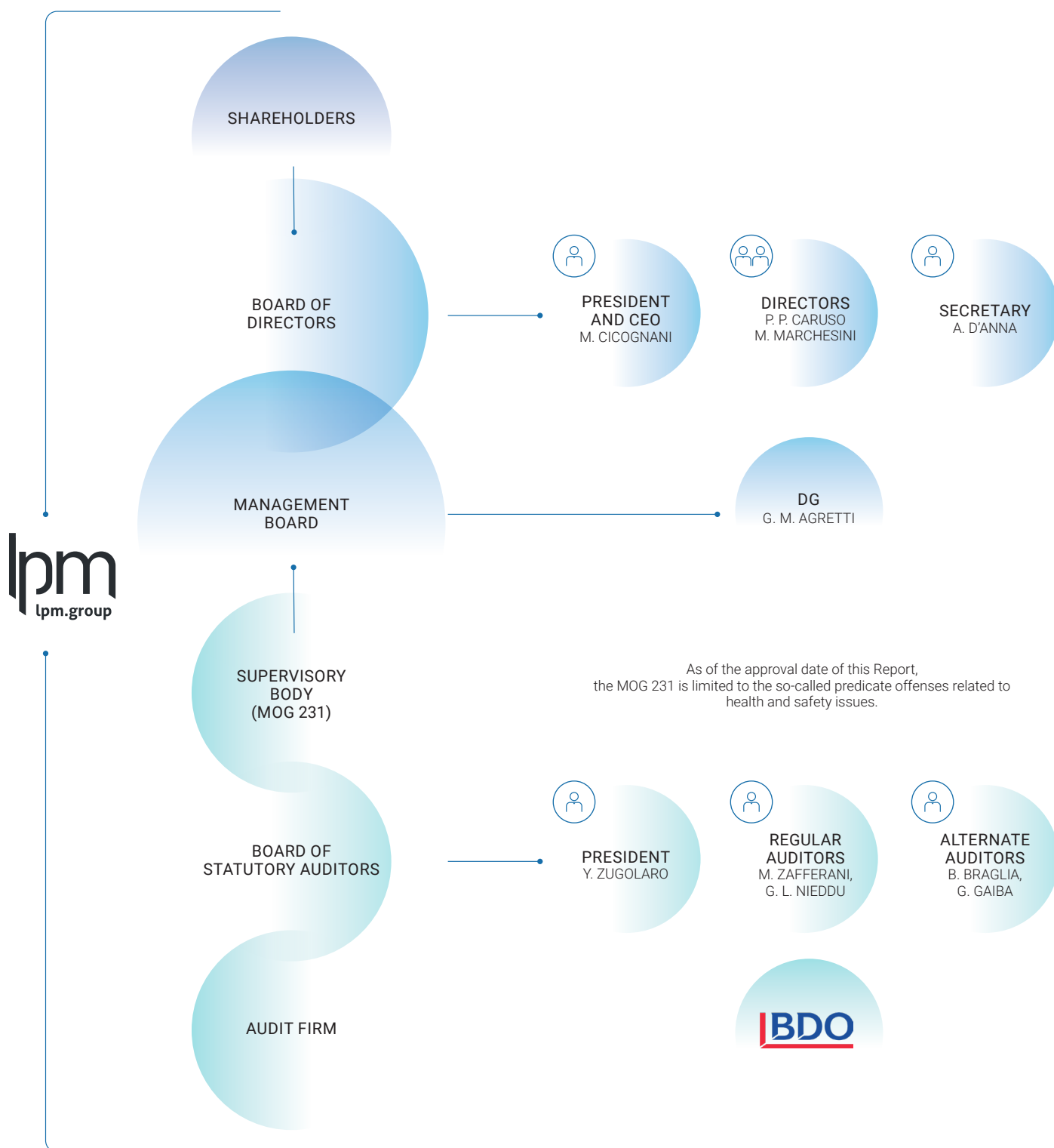


The group's mission is to comply with the most important international standards, ensuring quality, environmental protection, health, and safety, especially through the use of bioplastics.

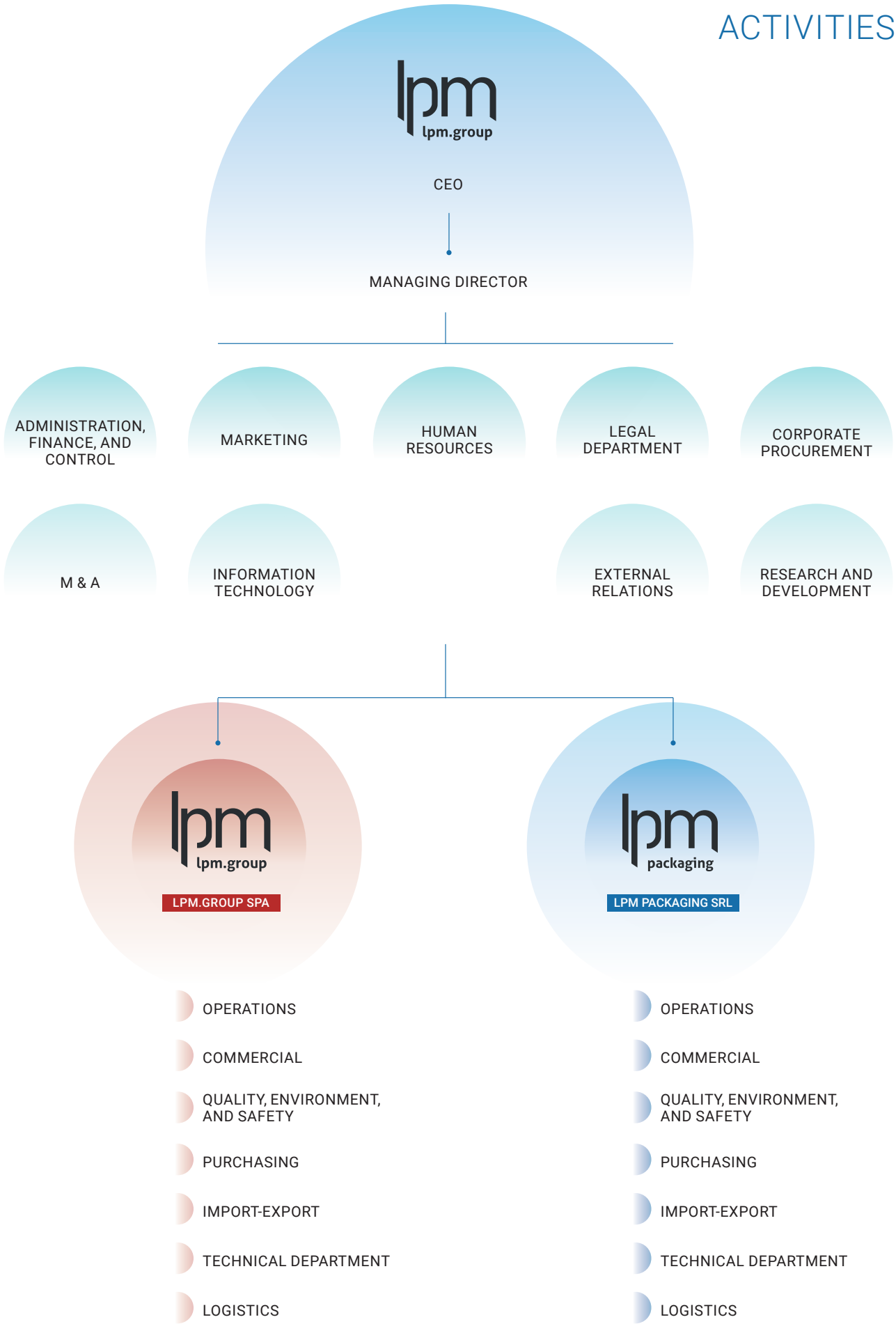
CORPORATE GOVERNANCE OF **lpm.group**

lpm pays special attention to the adequacy and functioning of its corporate governance, monitoring and evolving its decision-making and control structures in accordance with the national best practices.

lpm is guided by the principles of fairness and transparency in management and communication, implementing these principles through a continuous process of verifying their real implementation and effectiveness.



ACTIVITIES





Via Vizzano, 23 – Fraz. Pontecchio Marconi
40037 – Sasso Marconi – (BO) – Italy

Tel: +39 051 6048311
info@lpm.group – www.lpm.group